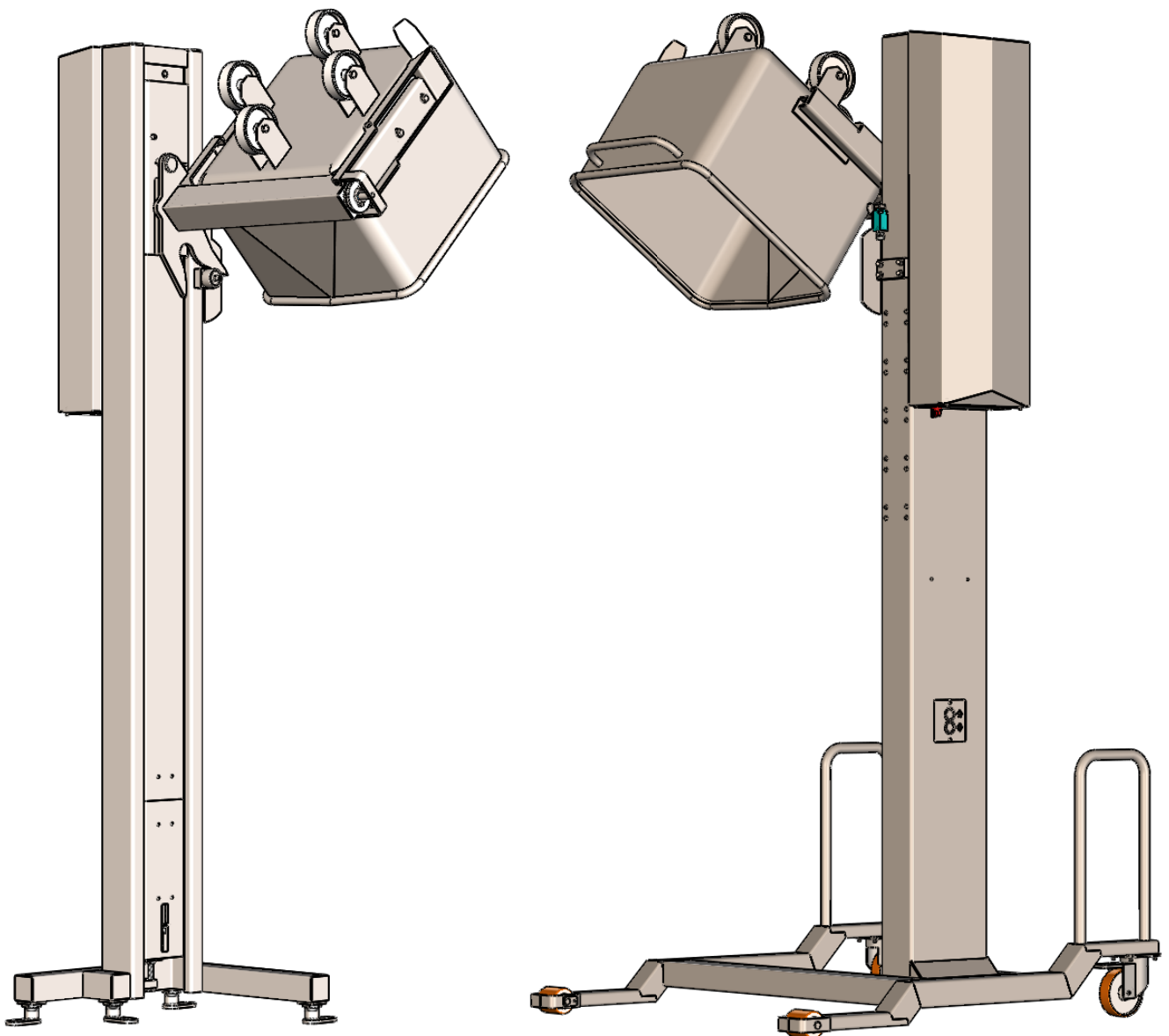
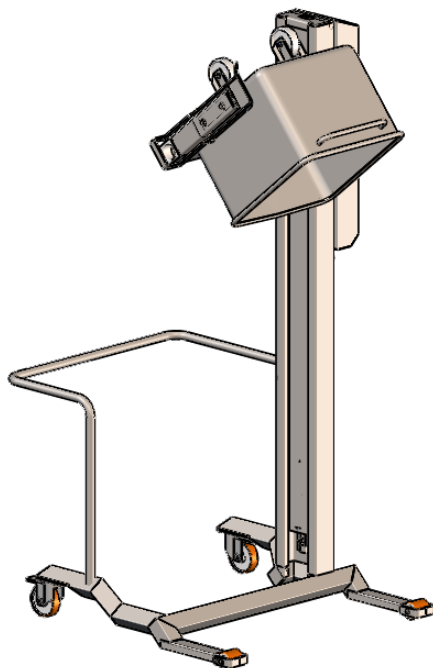


Specifications	
Description	Lifts and tips product from eurobins into a hopper or vessel
Bin Type	200 and 300 litre eurobins (Can be designed to lift alternative containers)
Safe working load	300kg
Tip angle	145° max (55° from horizontal)
Lifting speed	6m/min (100mm/second)
Power supply	415 volt (3-phase, neutral and earth, 50Hz, 16 amp)
Control voltage	24V AC
Operating environment temperature	-10°C to 40°C
Controls	Hold to run buttons. Automatic option with fixed sheet guarding and interlocked door
Drive type	Braked gear motor and rollerchain
IP rating	IP65 minimum
Safety features	Chain break mechanism. Mechanical interlock stops bin lock from opening when lifting and prevents lifting when the bin is not securely in position
Conformity with standards	BS EN 13288 - Food Processing Machinery - bowl lifting and tilting machines BS EN 1672-2 - Food Processing Machinery - Hygiene requirements DIN 9797 - Transport carts and take-up systems

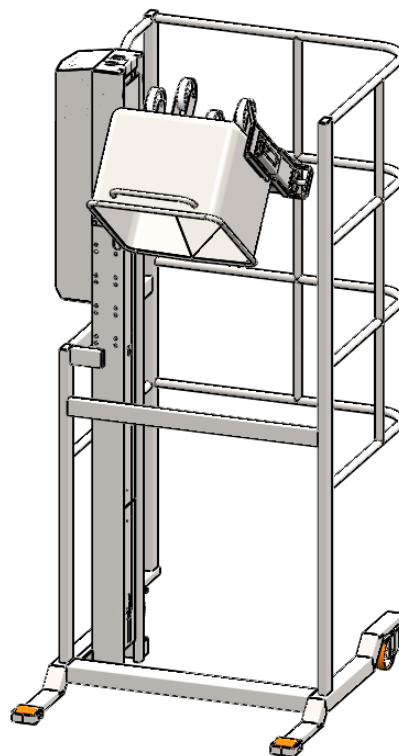


Following options available for bolt down and mobile units

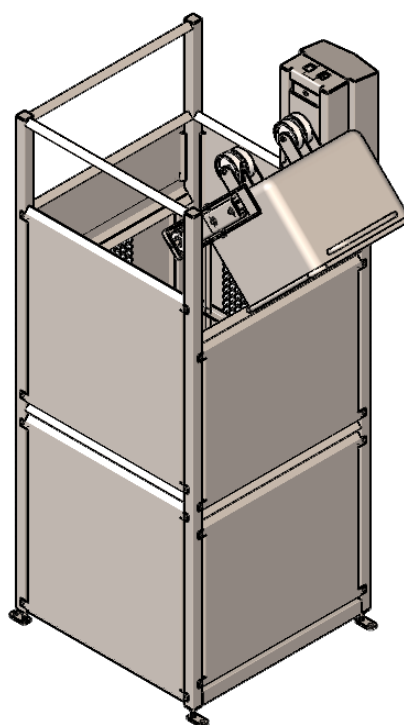
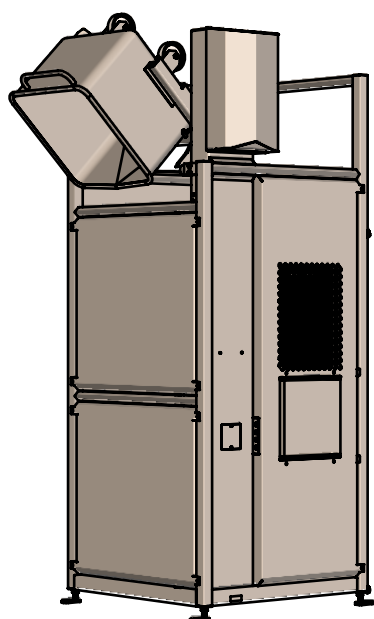
Bump Rail Guarding

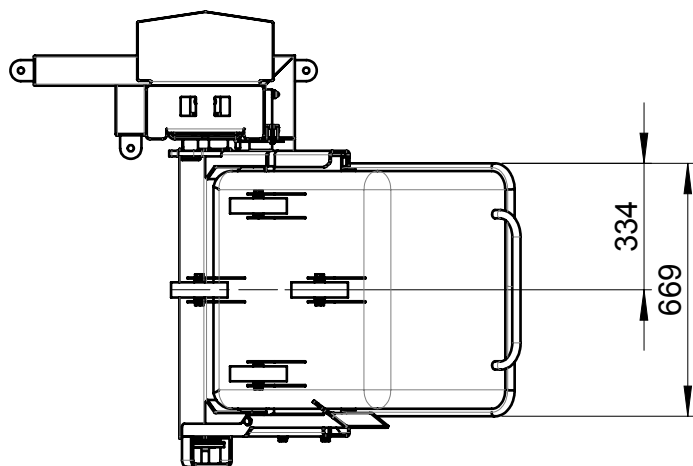
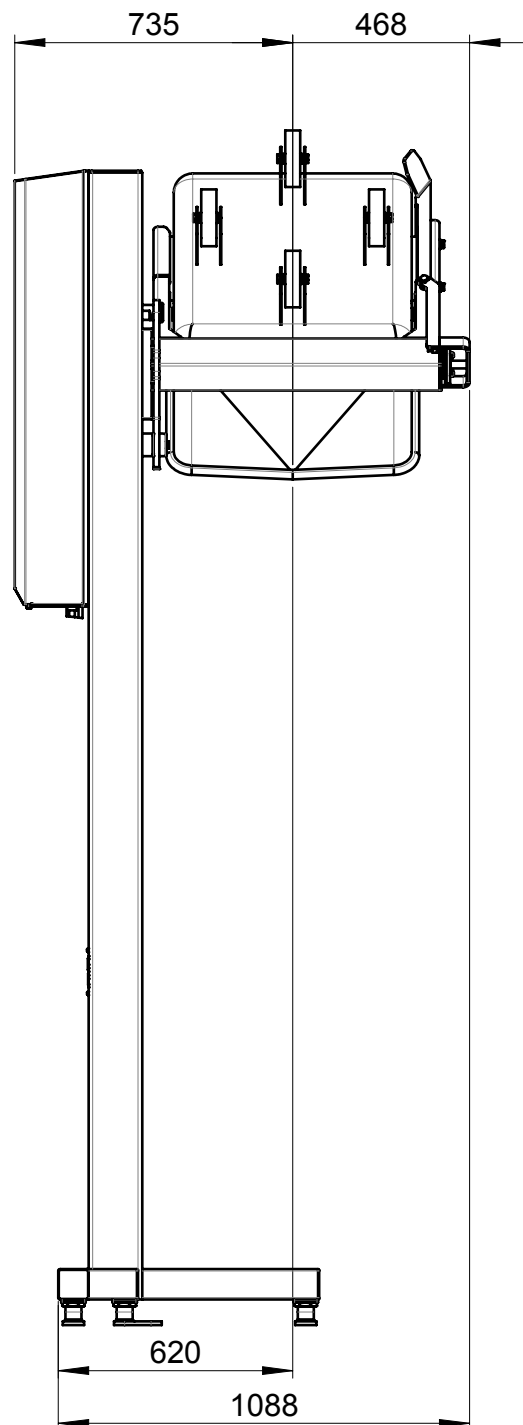
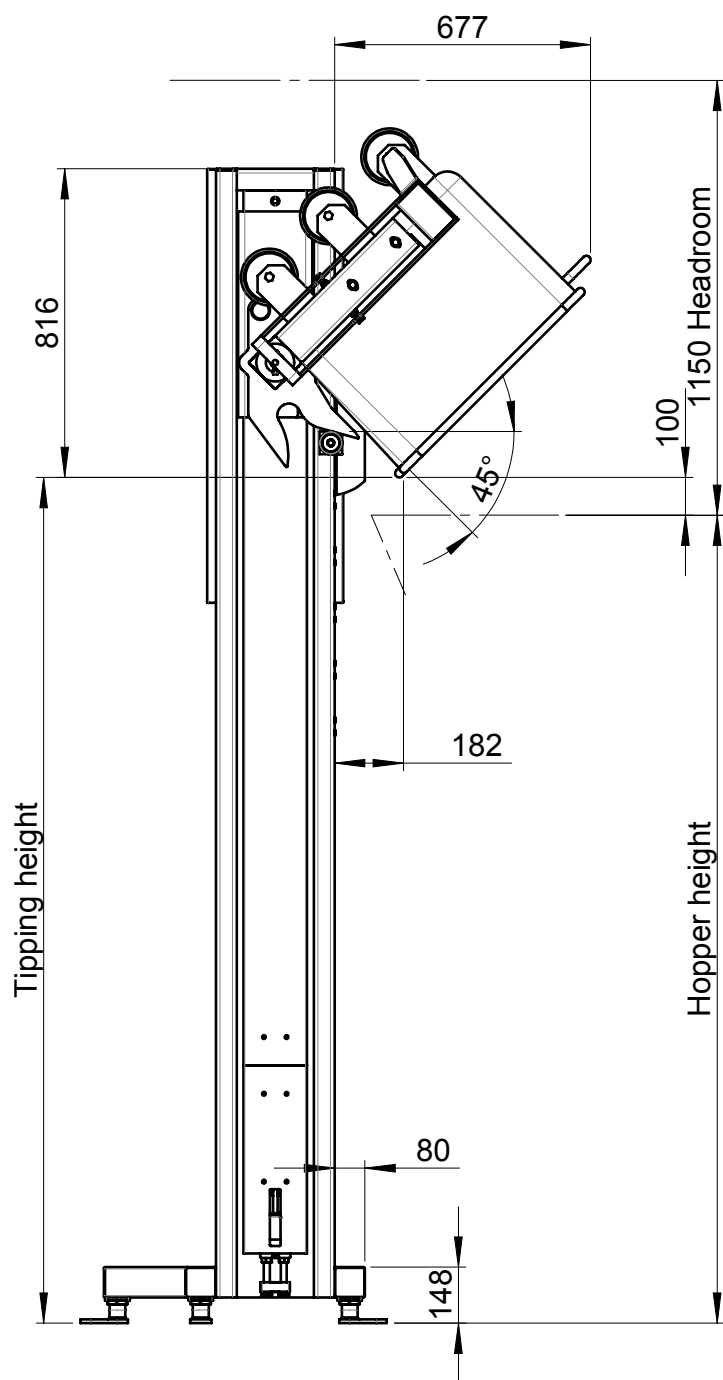


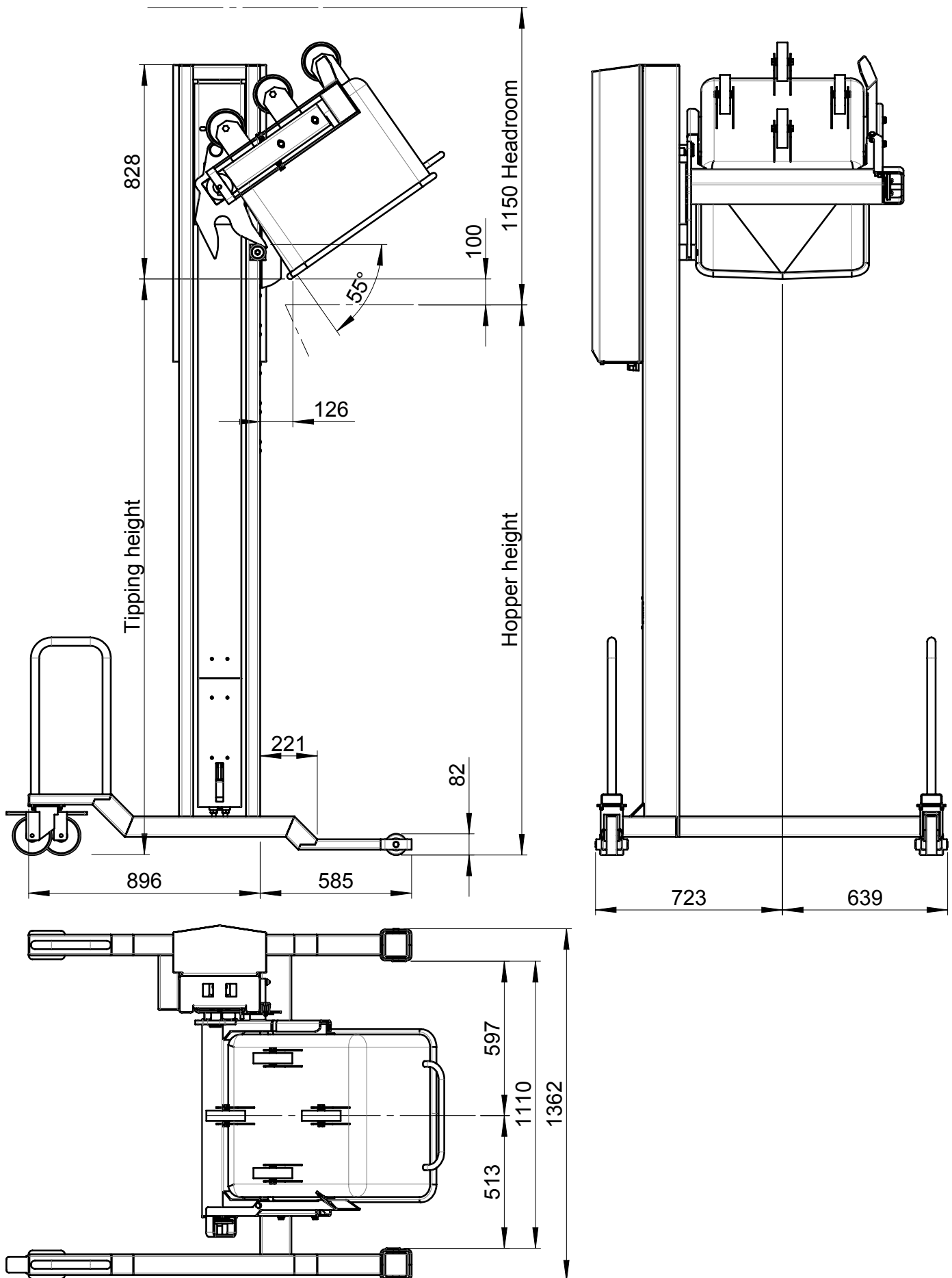
Skeletal Guarding

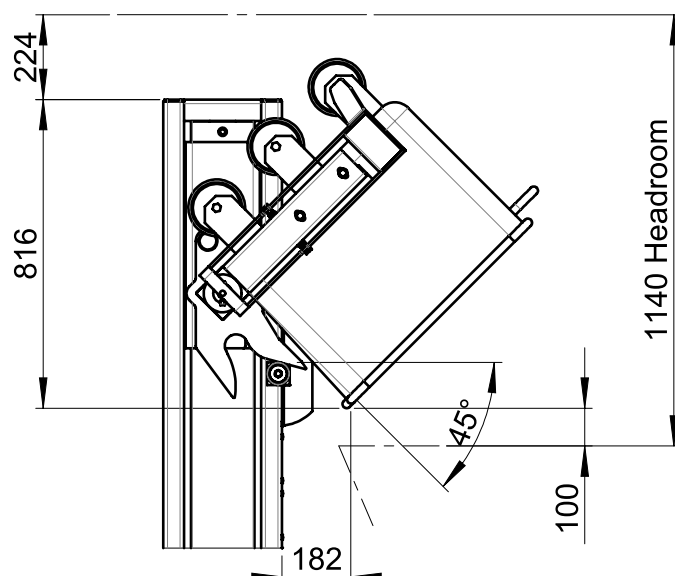


Full Sheet Guarding

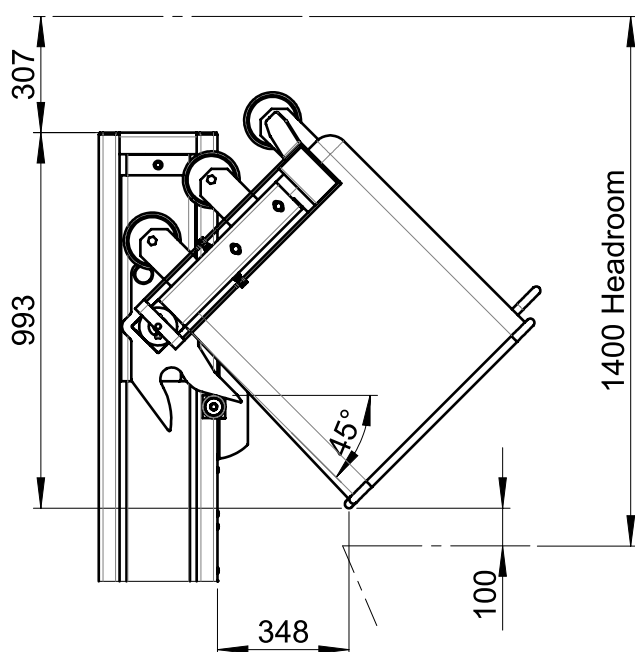




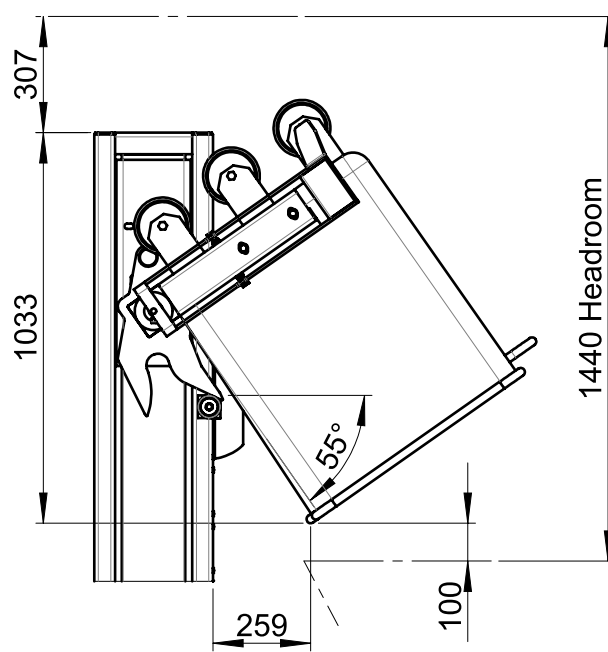




200 litre bin 45° option



300 litre bin 45° option



300 litre bin 55° option

Information required

Headroom	Minimum clearance under ceiling, lights, pipes etc
Access for installation	Dimensions of corridors and doorways. Availability of lifting equipment in the area
Product type	Name and characteristics of the product
Tipping angle needed	30 to 55 degrees, depending on product characteristics
Throughput needed	In tips per hour or kg per hour



SYSPAL LTD Cockshutt Lane, Broseley, Telford, Shropshire, TF12 5JA, England

t: +44 (0) 1952 883188 f: +44 (0) 1952 884093 e: sales@syspal.comwww.syspal.com