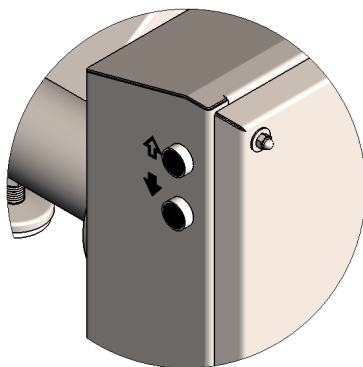
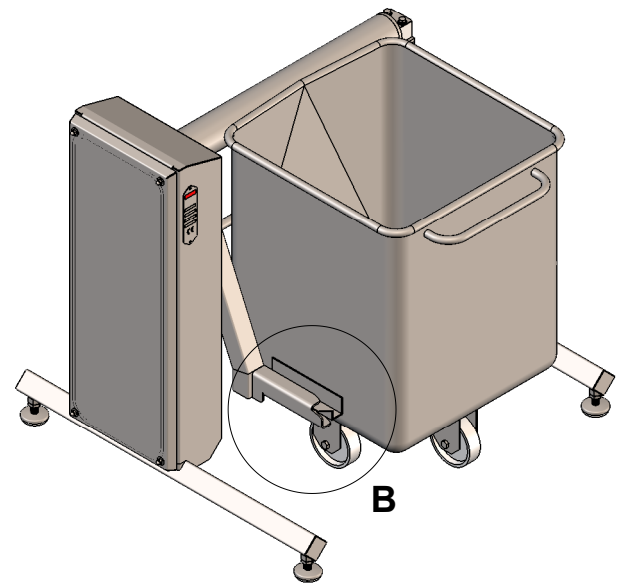
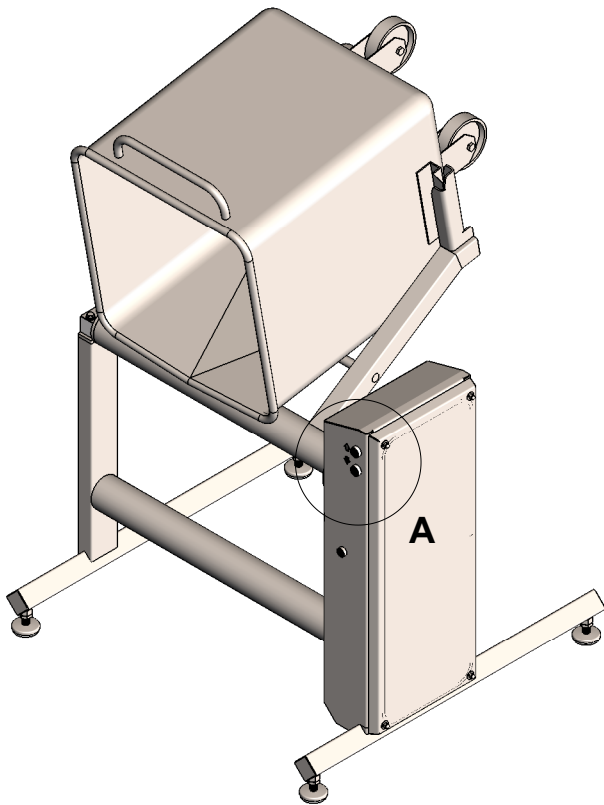
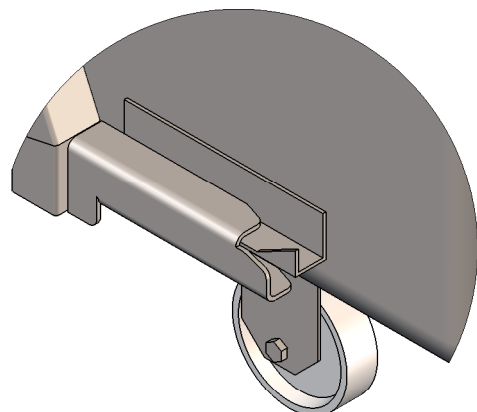


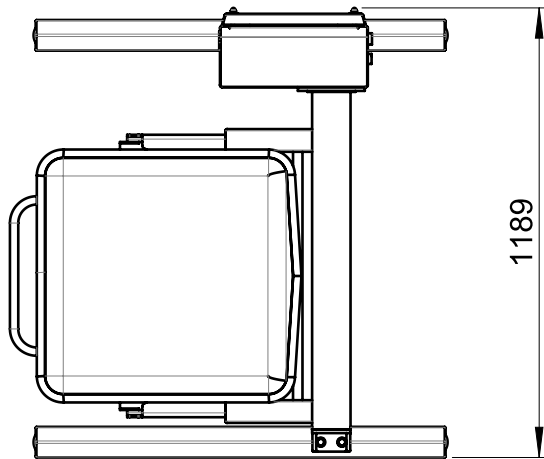
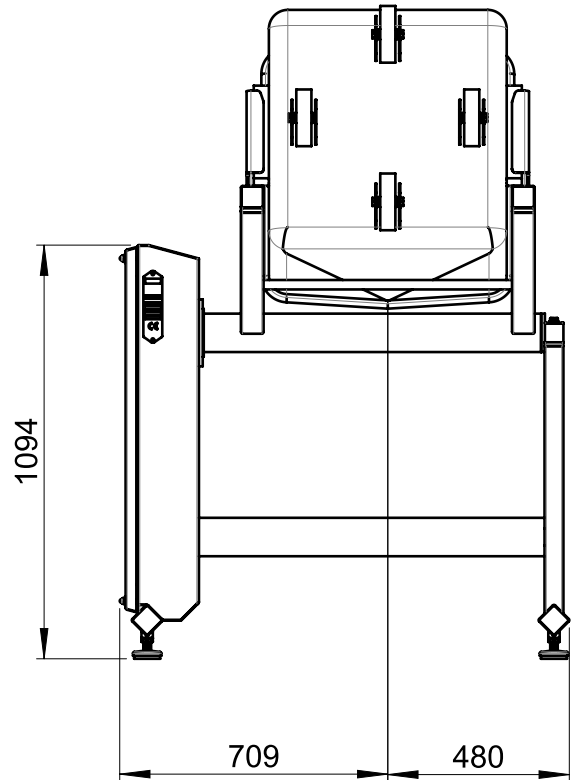
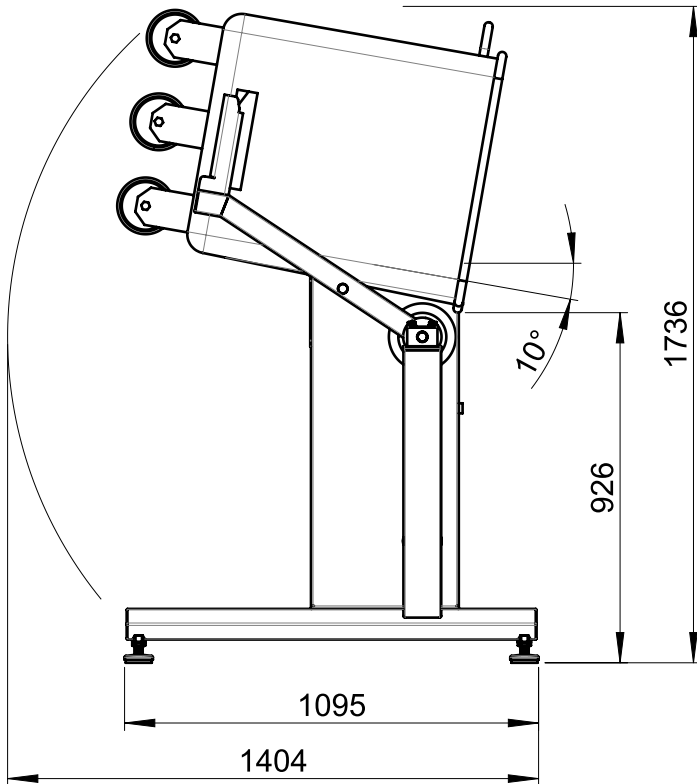
| Specifications | |
|----------------------|---|
| Description | A pneumatic cylinder raises and tilts the eurobin enabling cleaning in one position |
| Materials | 304 grade stainless steel |
| Bin type | Standard 200 and 300 litre eurobins (DIN 9797) |
| Safe working load | 50kg |
| Tip angle | 100° (10° from horizontal) |
| Cycle time | 20 seconds; 10s raise, 10s lowering |
| Air supply | Dry, clean filtered compressed air at 6 bar pressure. |
| Free air consumption | 23 litres/cycle, 68 litres/minute flow rate |
| Controls | Hold-to-run pneumatic pushbuttons |
| Mass | 100kg |



DETAIL A



DETAIL B



| Information required | |
|----------------------|---|
| Air supply | Confirm availability of compressed air supply |
| | |
| | |

| | |
|---|---|
|  ISO 9001 FM 25162 | SYSPAL LTD Cockshutt Lane, Broseley, Telford, Shropshire, TF12 5JA, England t: +44 (0) 1952 883188 f: +44 (0) 1952 884093 e: sales@sypal.com www.sypal.com |
| | |

Notes :